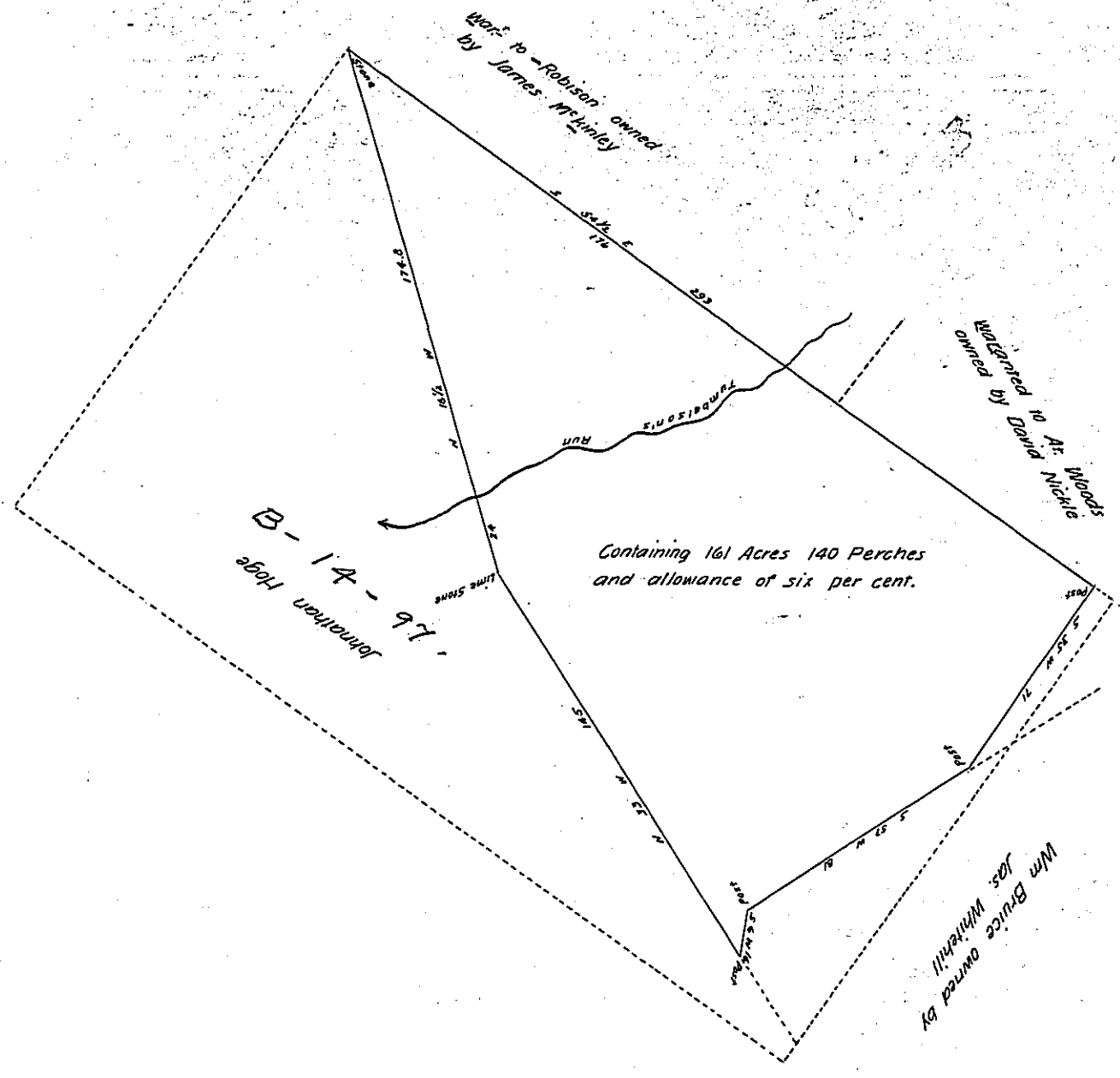


(See C-66-146)  
(original)



The above Draft in black lines Represent a part of a tract of land (the whole tract contains 300 Acres 120 perches and allowance of six per cent) resurveyed August 19<sup>th</sup> A.D. 1846 for William Hoge in pursuance of a warrant granted to Mary Follows dated August 25<sup>th</sup> 1784, situate on Tumbelson's Run in Hanover Township Beaver County adjoining land as above described containing one hundred and sixty one acres and 140 Perches and allowance of six per cent

Samson S. Nye, D. S.

To Hon. John Laport  
Surveyor General of  
the State of Pennsylvania

IN TESTIMONY that the above is a copy of the original remaining on file in the Department of Internal Affairs of Pennsylvania, made conformably to an Act of Assembly approved the 16th day of February, 1833, I have herunto set my Hand and caused the Seal of said Department to be affixed at Harrisburg, this  
twelfth day of May 1905

*[Signature]*  
Secretary of Internal Affairs.